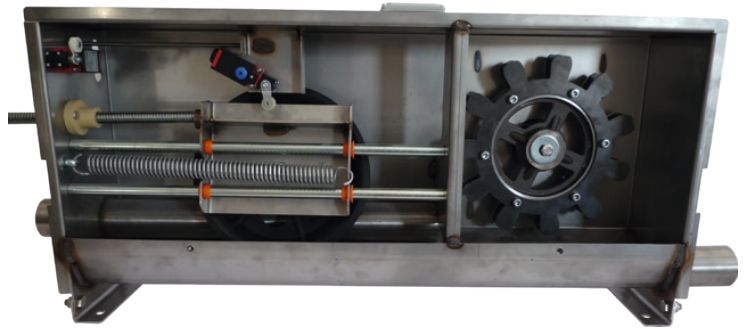




EFT

Billerbeck



Chain Conveyor

Chain Conveyor

Mounting parts

Spare parts

Ewering Farm Technology GmbH & Co. KG

Hamern 22

48727 Billerbeck

+49 176 8783718

info@eft-billerbeck.de

www.eft-billerbeck.de

District court Coesfeld HRA9658

VAT number: DE359207645



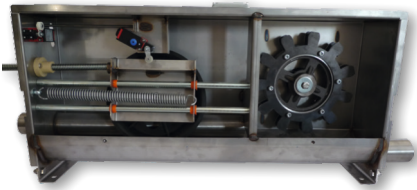


We rely exclusively on in for our chain conveyor products Goods made in Germany.
Delivery times, quality and a hassle-free Communication is the basic requirement
for smooth processing Of orders.
Fast availability is guaranteed.
Spare parts for third-party products are also available on request.

Chain Conveyor

Chain Conveyor	S. 4
Mounting parts and accesories	S. 29
Spare parts	S. 39

basic components



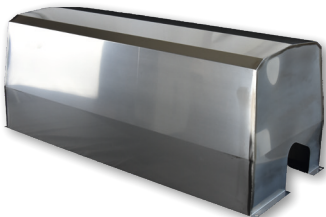
U10003-...

drive unit standard

for $\varnothing 60$ mm chain conveyor and chain with 71,5 pitch, POK 150

- 3Ph 50Hz, stainless steel, 35 rpm
 - with steel drive wheel
 - deflection wheel with ball bearing
 - tension slider mounted on bearing
 - 2 roller end switches:
1x for chain monitoring with reset button
1x for lid monitoring
- Qty: 1 pcs. pallet: 8 pcs.

U10003-1,5R.....model: 1,5 KW, chain runs out on the right side
 U10003-1,5L.....model: 1,5 KW, chain runs out on the left side
 U10003-1,5R-230V model: 1,5 KW, chain runs out on the right side
 1PH, 230 Volt with frequency converter
 U10003-2,2R.....model: 2,2 KW, chain runs out on the right side
 U10003-2,2L.....model: 2,2 KW, chain runs out on the left side
 U10003-2,2R-230V..... model: 2,2 KW, chain runs out on the right side,
 1 PH, 230 Volt with frequency converter



U10035

stainless steel rain cover

for all drive units

- material: stainless steel 1.4301
 - 1140 x 450 x 455 mm
- Qty: 1 pcs..



U10024

wall bracket

for all drive units

- without mounting material
- Qty: 1 pcs.

basic components

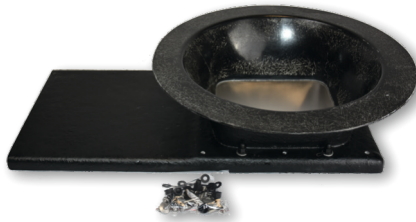


U10025 - U10028

wall bracket, galvanized

for drive unit

- U10025.....450 x 600 mm, with 2 struts, Qty: 1 pcs.
- U10026.....350 x 450 mm, with strut, Qty: 24 pcs.
- U10027.....250 x 350 mm, with strut, Qty: 20 pcs.
- U10028.....150 x 200 mm, without strut, Qty: 70 pcs.



U10038

silo connection hopper

with horizontal flange

- compl. mounted with plastic shutter guide and shutter
 - incl. mounting set
 - material: GFK, min. 5mm
 - color: black
 - outer flange diameter: 540 mm
 - inner flange diameter: 440 mm
- Qty: 1 pcs.

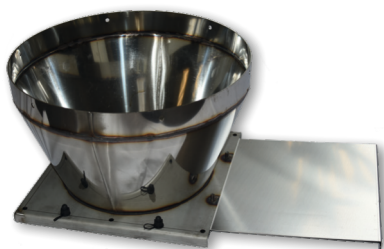


U10039

silo connection hopper

with vertical flange

- compl. mounted with plastic shutter guide and shutter
 - incl. mounting set
 - material: GFK, min. 5mm
 - color: black
 - outer flange diameter: 440 mm
- Qty: 1 pcs.



U10040

silo connection funnel

made of stainless steel,

- for plastic shutter guide,
 - with vertical flange,
 - outer flange = 440 mm Ø
- Qty: 1 pcs.

basic components



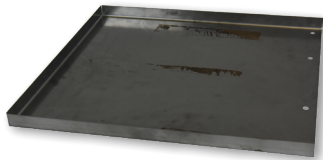
U10041

silo connection funnel

made of stainless steel

- compl. mounted with plastic shutter guide and shutter
- with horizontal flange
- outer flange = 540 mm Ø

Qty: 1 pcs.



U10040-Regenabdeck

rain cover t=1,0 mm

for silo connection funnel 10040 and 10041

- material: stainless steel - 1.4301 V2A

Qty: 1 pcs..



U10042-DoppelGFK

double GFK boot

with shutter

- for two intake hoppers

Qty: 1 pcs.



U10043-350

silo connection funnel, V2A (AISI 304)

with vertical flange and shutter

- 2-part, for Trevira sack-silo
- outside flange-Ø= 350 mm
- min. installation height: 310 mm

Qty: 1 pcs.

Other sizes on demand!



U10046

cover for hopper

suitable for hopper 10047-10052

- with Ø150 mm socket
- 365 x 365 mm
- material: stainless steel

Qty: 1 pcs.

basic components



U10047

hopper 1-line

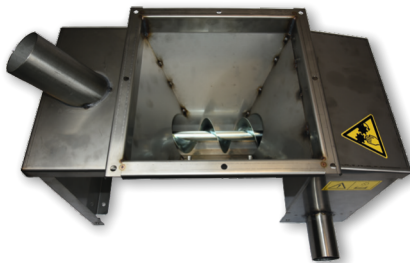
- for 60 mm conveyor systems
 - with plastic shutter guide
 - vertical screw connections
- Qty: 1 pcs.



U10048

hopper 2-line

- for 60 mm conveyor systems
 - with plastic shutter guide
 - vertical screw connections
- Qty: 1 pcs.



U10049

hopper 1-way

- with chain-driven dosing screw
- made of stainless steel

Qty: 1 pcs.

U10049-25L.....25 % filling, chain runs out on the left side

U10049-25R.....25 % filling, chain runs out on the right side

U10049-50L.....50 % filling, chain runs out on the left side

U10049-50R.....50 % filling, chain runs out on the right side



U10050

hopper 2-way

- with chain-driven dosing screw
- made of stainless steel

Qty: 1 pcs.

U10050-25.....25 % filling, 1 direction

U10050-25LR.....25 % filling, 2 directions

U10050-50.....50 % filling, 1 direction

U10050-50LR.....50 % filling, 2 directions

basic components



U10051

hopper 1-way

with 2 gear motors 0,18 kW

- with motor-driven dosing screw
- made of stainless steel

25% filling

Qty: 1 pcs.

U10052-50.....50% filling



U10052

hopper 2-way

with motor-driven dosing screw

- made of stainless steel

25% filling

Qty: 1 pcs.



U10051-Haube

cover for 0,18 kW gear motor

- incl. mounting material
- material: stainless steel
- measurements: 350x205x180

Qty: 1 pcs.



U10053

conveyor unit Flex-Auger

spiral conveyor system on 60 mm conveyor pipe

consists of:

- 2x cases, plastic
- 0,5 mtr 70mm transparent pipe
- screw set

Qty: 1 pcs.

Suitable for for control unit 20035-A2 in connection with with drain funnel

basic components



U10053A

conveyor unit Flex-Auger

spiral conveyor system on 60 mm conveyor pipe

- consists for:
 - 2x cases
 - 0,5 mtr. 70mm transparent pipe
 - screw set
 - 75mm flex auger outlet, red
- Qty: 1 pcs.



U10054

conveyor unit chain feeding

chain feeding 60mm on 60 mm conveyor pipe

consists of:

- 4x cases
 - 0,5 mtr 70mm transparent pipe
 - screw set
- Qty: 1 pcs.



U10059

Conveyor unit

60 mm conveyor pipe to hopper-rest-uptake

consists of:

- 2x cases, Polyurethan
- 3 mtr 70mm tube
- screw set

Qty: 1 pcs.

10058.....with stainless steel tube

10059.....with pvc tube



U10055

pipe transition

galvanized

- for ø60mm conveyor pipe
 - mounting height: 190mm
- Qty: 1 pcs.

basic components



U20530

clamping ring 2 mm

- 2 parts, galvanized
- Ø 150 mm
- Qty: 4 pcs.
- U20530-VA.....in stainless steel



U20533

transfer stainless steel, flex auger

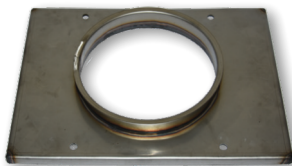
- square to round
- suitable for control unit U20035-A2
- Qty: 1 pcs.



U20533-Sensor

transfer stainless steel, flex auger

- square to round, for sensor
- suitable for control unit 20035-A2
- Qty: 1 pcs.



U20534

cover for stainless steel hopper

- with ø150mm socket
- material: stainless steel
- Qty: 1 pcs.

U20534-Offen-Schieber: incl. slider and slider guide

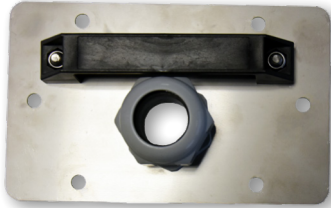


U21037

EFT receiving hopper for 60 mm spiral

- without shaft
- material: stainless steel
- Qty: 1 pcs.

basic components



U95224-Sensor

cover for EFT hopper

- t=2mm
 - stainless steel
 - with opening for sensor
- Qty: 1 pcs.



U10061 - U10063

storage container

for chain conveyors; stainless steel

Qty: 1 pcs. (disassembled)

- U10061..... content: 50 ltr., h: 280 mm, w: 440 mm, d: 440 mm without shutter
 U10062..... content: 100 ltr., h: 490 mm, w: 570 mm, d: 570 mm without shutter
 U10063..... content: 200 ltr. h: 816 mm, w: 576 mm, d: 576 mm without shutter



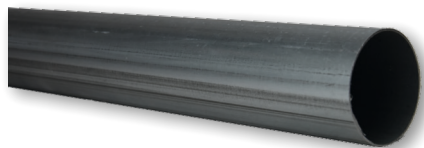
U10064

Storage hopper, SST without shutter

for chain-conveyor

- intake: 350 ltr.
- Qty: 1 pcs.

basic components



U10065 - U10070

conveyor pipe

sendzimir galvanized according to EN 10305-3; length: 6.000 mm

U10065-50.....50,8 x 1,5 mm; Qty: 61 pcs., length: 5 mtr., on demand

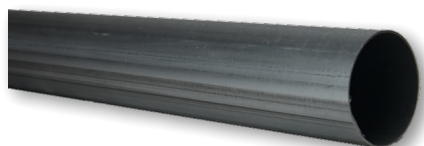
U10065-60.....60 x 1,25 mm; Qty: 68 pcs.

U10066.....60 x 1,5 mm; Qty: 68 pcs. on demand

U10067-75.....75 x 1,5 mm; Qty: 68 pcs., on demand

U10068.....80 x 1,5 mm; Qty: 39 pcs.

U10070.....101,6 x 2,0 mm, Qty:36 pcs.



U10074 - U10075

conveyor pipe stainless steel

length: 6.000 mm

U10074.....60,3 x 1,2 mm; Qty: 37 pcs.

U10074-101,6. ...101,6 x 2,0 mm

U10074-70.....70,0x1,5 mm

U10074-76,1....76,1 x 1,5 mm

U10074-88,988,9 x 2,0 mm

U10075.....60,3 x 1,5 mm; Qty: 68 pcs.

U10076.....80 x 1,5 mm, Qty: 50 pcs.

basic components

U10079-45 - U10081



tube connector

1 piece, with screw-set, length: 200 mm

• 4 holes = 8 mm

U10080-38.for Ø 38 mm conveyor pipe, galvanized, Qty: 92 pcs.

U10080-45.for Ø 45 mm conveyor pipe, galvanized, Qty: 66 pcs.

U10080-48.for Ø 48 mm conveyor pipe, galvanized

U10079-50.....for Ø 50 mm conveyor pipe, galvanized, Qty: 66 pcs.

U10082.....for Ø 60 mm conveyor pipe, galvanized, Qty: 40 pcs.

U10080-50.....for Ø 50 mm conveyor pipe, stainless steel, Qty: 66 pcs.

U10081.....for Ø 60 mm conveyor pipe, stainless steel, Qty: 40 pcs.

U10086



sensor holder B for sight glass 10084

• material: PP

• colour: black

Qty: 60 pcs.

U10084



sight glass for chain conveyor 60 mm

made of 2 half-casings

• incl. set of screws

• material: PC

Qty: 1 pcs.

Qty: 8 pcs. in a box

U70160



sensor holder A

for control pipe 10085

• material: PP

• colour: black

• for all pipe sizes (56, 60, 75, 89 and 127 mm)

Qty: 70 pcs.

U10085



control pipe for Ø 60mm conveyor pipe

with 2 pipe clamps

• material: PVC

Qty: 1 pcs.

Qty: 8 pcs. in a box

basic components



U12010

cable gland

- sensor mounting M40x1,5 mm
 - with counter nut
- Qty: 1 pcs.



U12015

sensor holder

- galvanized
 - for pipe size: Ø 60 mm
- Qty: 1 pcs.



U96000

hose clamp 12mm

- 25 – 40 mm
 - for sensor holder A/B (item 10086 / 70160)
- Qty: 25 pcs.



U96003

hose clamp W4

- DIN 3017 A2 50 x 70/12**
- for pipe Ø 56 mm
- Qty: 25 pcs.

basic components



U10089-1

stainless steel transfer corner for 60 mm conveyor pipe

- with cast-iron wheel
- with ball-bearing
- incl. screws

U10088.....stainless steel transfer corner 90°, Qty: 5 pcs./box

U10089-1stainless steel transfer corner 90°, Qty: 4 pcs.

U10089-180.stainless steel transfer corner 180°, Qty: 4 pcs.



U10100 + U10107

transfer corner 90 °

glass-fiber reinforced plastic

- for 60 mm conveyor pipe
- with cast-iron wheel
- with ball-bearing
- incl. screws

U10100.....color: blue

U10105.....color: black

U10107.....color: green

other colors on demand



U10101

transfer corner 90 °

glass-fiber reinforced plastic

- for 50 mm conveyor pipe
- with cast-iron wheel
- with ball-bearing
- incl. screws

• color: blue

Qty: 72 pcs.



U10125

transfer corner 45 °

glass-fiber reinforced plastic

- for 60 mm conveyor pipe
- with cast-iron wheel
- with ball-bearing
- incl. screws

• color: black

Qty: 72 pcs.

basic components



U72660

sealing set for transfer corner 90°

- consists of:
 - 2 rings
 - 2 plates
- for item 10100, 10105, 10107
- Qty: 1 pcs.



U72622

reinforcement ring for transfer corner

- D = 64 mm
- d = 57,25 mm
- t = 2 mm
- material: stainless steel
- for item 10100, 10105, 10107
- Qty: 1 pcs.



U10130

strengthening clamp

for transfer corners (ø 60 mm conveyor pipes)

- galvanized, with screws
- Qty: 120 pcs.

basic components



U10140

conveyor chain MONRO for 60mm tubes

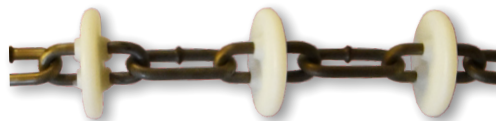
- Ø = 43 mm / 71,5 mm
 - hardened, galvanized
 - material: PA GF
- Qty: 50 mtr. in a box
Qty: 800 mtr. on a pallet



U10146

conveyor chain for 60mm tube

- Ø 48 mm / 71,5 mm
 - hardened
 - material: PA
- Qty: 50 mtr. in a box
Qty: 1000 mtr. on a pallet



U10151

conveyor chain for 60mm tube

- Ø 44 mm / 71,5 mm
 - hardened
 - material: PA
- Qty: 50 mtr. in a box
Qty: 1.000 mtr. on a pallet



U10154

conveyor chain for 45 mm systems

hardened, special steel

- Ø 35 mm / 51 mm
 - material: PA
 - colour: nature
- Qty: 50 mtr. in a box
Qty: 1.000 mtr. on a pallet



U10157

chain connector, hardened

for pitch: 71,5 mm

- for item 10140, 10146, 10151
 - thickness: 7 mm
- Qty: 100 pcs.

basic components



U10159-

outlet for 60mm chain conveyor

- bottom outlet for telescopic pipe 70/75
- with shutter
- U10159-VVM-BLAU.....color: blue
- U10159-VVM-ROT.....color: red
- U10159-VVM-GRÜN.....color: green
- Qty: 80 pcs.
- Other colors on request!



U10159-Klammer

clamp bracket

- for telescopic pipe
- Qty: 1 pcs.



U10160

outlet with slider type 60

for 60 mm chain conveyor

- top / bottom bolted
- casingcolour: black
- material: ABS
- suitable for transparent telescopic pipe 25010
- Qty: 1 pcs.
- U10160-T-Orange shuttercolor: orange
- U10160-T-Blau...shuttercolor: blue
- U10160-T-Grün...shuttercolor: green



U24005

outlet for Ø 60 mm spiral

- with shutter
- colour: red
- for item 25005
- Qty: 50 pcs.

basic components

U25005 - U25020

transparent telescopic pipe

• with tubelock, 2 x 1 mtr

U25005.....drop pipe 60 mm, telescopic pipe 65mm, Qty: 130 pcs.

U25010.....drop pipe 70 mm, telescopic pipe 75mm, Qty: 120 pcs.

U25015.....drop pipe 75 mm, telescopic pipe 80mm, Qty: 100 pcs.

U25020.....drop pipe 80 mm, telescopic pipe 85mm, Qty: 90 pcs.



U25105 - U25135

transparent drop tube, loose

• 1 x 1 mtr

U25105.....Ø 60 mm, Qty: 130 pcs.

U25115.....Ø 65 mm, Qty: 130 pcs.

U25120.....Ø 70 mm, Qty: 210 pcs.

U25125.....Ø 75 mm, Qty: 189 pcs.

U25130.....Ø 80 mm, Qty: 162 pcs.

U25135.....Ø 85 mm, Qty: 144 pcs.



U25235 - U25265

transparent drop tube, loose

• 1 x 3 mtr

U25235.....Ø 60 mm, Qty: 80 pcs.

U25245.....Ø 65 mm, Qty: 80 pcs.

U25250.....Ø 70 mm, Qty: 100 pcs.

U25255.....Ø 75 mm, Qty: 100 pcs.

U25260.....Ø 80 mm, Qty: 100 pcs.

U25265.....Ø 85 mm, Qty: 80 pcs.



basic components



U10161 - U10165

volume dispenser

content: appr. 9 ltr.

dimensions: height 565 mm; Ø = 200 mm

funnel outlet Ø = 75 mm

• with flat shutter

U10161-M.....color: red

U10162-M.....color: black

U10163-M.....color: blue

U10164-M.....color: green

U10165-M.....color: yellow

Qty: 40 pcs.

Also available with round shutter



U10161-6 - U10165-6

volume dispenser

content: appr. 6 ltr.

dimensions: height 395 mm; Ø 200 mm

funnel outlet Ø = 75 mm

• with flat shutter

U10161-M-6.....color: red

U10162-M-6.....color: black

U10163-M-6.....color: blue

U10164-M-6.....color: green

U10165-M-6.....color: yellow

Qty: 50 pcs.

Also available with round shutter.



U10161-D - U10165-D

volume dispenser for double pipe system

2x 60 mm, content: appr. 9 ltr.

funnel outlet Ø = 75 mm

U10161-DOPPEL ROT.....color: red

U10162-DOPPEL SCHWA.....color: black

U10164-DOPPEL GRUEN.....color: green

U10165-DOPPEL GELB.....color: yellow

Qty: 24 pcs.

basic components



U10300 - U10315

volume dispenser with minimal-volume

- content: appr. 0,3 - 10,5 ltr.
- dimensions: height: 610 mm; Ø = 200 mm
- funnel outlet Ø = 75 mm
- Colour: black
- with flat shutter

U10300.....connection: 1-way, funnel: centric transparent

U10305.....connection: 1-way, funnel: eccentric transparent

U10310.....connection: 2-way, funnel: centric transparent

U10315.....connection: 2-way, funnel: eccentric transparent

Other colors on request.



U10173

holding clip for dispenser

with rope guide

Qty: 100 pcs.



U95780

splash water protection

for volume dispenser with minimal-volume

Qty: 150 pcs.

basic components

U10171



pipe support for volume dispenser

Z-profile, stainless steel

• with u-bolts

Qty: 1 pcs.

U96003



hose clamp W4

DIN 3017 A2 50 x 70/12

• for pipe Ø 56 mm

Qty: 25 pcs.

U110300



cable tie 7,8 x 360 mm

• color: black

Qty: 100 pcs.

U10166 - Transparent



funnel outlet 75 mm

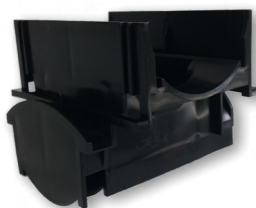
for wall mounting

• for V.V.M. volume dispenser

• color: transparent

Qty: 48 pcs.in a box

U10167-90



adapter for volume dispenser 90°

SQUARE-LINE

• for 60mm feeding line

• turned by 90°

Qty: 1 pcs.

basic components

U10169



adapter for feed intake of dispenser

- extension from Ø 60 mm to Ø 75 mm up to 90 mm
- color: black, material: PP

Qty: 100 pcs.

U10169 - 50



adapter for feed intake of dispenser

- reduction ø 60mm to ø 50/48/45 mm
- color: black, material: PP

Qty: 100 pcs.

U10168



reduction for funnel outlet

Ø 75 mm (outside) to Ø 70 mm (inside)

- for volume dispenser
- color: black

Qty: 250 pcs.

U95780



splash water protection

for volume dispenser with minimal-volume

Qty: 150 pcs.

U10172 - Seilführung



rope guide set

- consists of:
- 2x clamps
- 1x ring-screw SST M8x80mm
- 2x 6-K-stopnut SST M8
- 1x 6-K-nut SST M8
- 1x 6-K-screw SST M8x30mm
- 4x washer SST 8,4mm

Qty: 35 sets

basic components



U12001

Control EFS-01

- 1 plastic body with hinged lid, IP54
- complete with 1 mechanical contactor + motor protection relay, adjustable from 3.1 - 4.2 A, for the feed machine 1.5 kW, 380/400 V, 50 Hz
- Board prepared for receipt of 2. contactor/overload relay for feeder aggregate



U12003 - 1,5

Control MFK-1

switch box for feeding machine

- with connector for 1 limit switch 230 Vol
- 1 motor circuit breaker with relay for 1 feeding machine with motor 1.5 kW, 380/400 Volt, 50 Hz
- 1 selector switch operation off/on to select operation mode
- 1 timer 24 h for automatic system start
- 1 analogue timer „bypass-time limit sensor“ (at system start: „passing over“ of the limit switch)
- 1 analogue timer „maximum operation time limit“
- 1 analogue timer „signal time limit indication“ (important for feed carry-over)
- 1 illuminated push-button „red“ reset / failure (chain rupture)
- 1 illuminated push-button „green“ system „manual start“

12003-1-2,2

Control MFK-1

- with motor circuit breaker with relay for 1 feeding machine with motor 2,2 kW, 380/400 Volt, 50 Hz

basic components



Control MFK-2

- for 1 feeding machine + 1 feeding aggregates
- for controlling of one dry feeding system with flex auger or motor driven intake hopper, 1 drive unit 1,5 kW, 1 limit stop sensor of 230V and 1 sensor 230V for surveillance of overfilling of the chain through the feeding aggregate,
- - 1 motor circuit breaker with relay for 1 motor 1.5 kW, 380/400 Volt, 50 Hz
- 1 motor circuit breaker with relay for 1 motor-driven feed receiving stations à 0.18 kW, 380/400 Volt, 50 Hzz
- 1 selector switch operation OFF/ ON to select operation mode
- 1 timer of 24h for automatic system start
- 1 analog timer for "hold-up time full detection (during system start: "overdrive" of limit swicht sensor
- 1 analog timer "detection time of full detection"
- 1 analog timer "delayed switch-on of feeding aggregate"
- 1 illuminated push-button „red“ reset / failure
- 1 illuminated push-button „green“ system

U12003 - 1,5 - 0,18

Control MFK-2 - 1,5 kW

- with motor circuit breaker with relay for 1 feeding machine with motor 1.5 kW, 380/400 Volt, 50 Hz
- and motor circuit breaker

U12003 - 1,5 - 0,75

Control MFK-2- 1,5 kW

- with motor circuit breaker with relay for 1 feeding machine with motor 1.5 kW, 380/400 Volt, 50 Hz
- and motor circuit breaker with relay for 1 aggregate with motor **0,75 kW**, 380/400 Volt, 50 Hz

U12003 - 2,2 - 0,18

Control MFK-2- 2,2 kW

- with motor circuit breaker with relay for 1 feeding machine with motor 2,2 kW, 380/400 Volt, 50 Hz
- and motor circuit breaker with

U12003 - 2,2 - 0,75

Control MFK-2 - 2,2 kW

- with motor circuit breaker with relay for 1 feeding machine with motor 2,2 kW, 380/400 Volt, 50 Hz
- and motor circuit breaker

basic components



Control MFK 3

- for 1 feeding machine + 2 feeding aggregates
- for controlling of one dry feeding system with 2x flex auger or motor driven intake hopper, 1 drive unit 1,5 kW, 1 limit stop sensor of 230V and 2 sensors 230V for surveillance of overfilling of the chain through the feeding aggregate
- 1 motor circuit breaker with relay for 2 motor-driven feed receiving stations à 0.18 kW, 380/400 Volt, 50 Hz (or feed spirals of up to 1.5 kW)
- 1 selector switch operation OFF/ ON to select operation mode
- 1 selector switch for feeder aggregate 1 or 2
- 1 timer of 24h for automatic system start
- 1 analog timer for "hold-up time full detection (during system start: "overdrive" of limit swicht sensor
- 1 analog timer "detection time of full detection"
- 1 analog timer "delayed switch-on of feeding aggregate"
- 1 illuminated push-button „red“ reset / failure
- 1 illuminated push-button „green“ system

U12003-3 - 1,5 - 0,18

Control MFK 3-1,5-0,18

- with motor circuit breaker with relay for 1 feeding machine with motor 1.5 kW, 380/400 Volt, 50 Hz
- and motor circuit breaker with relay for 2 aggregates with motor **0,18 kW**, 380/400 Volt, 50 Hz

U12003-3 - 1,5 - 0,75

Control MFK 3-1,5-0,75

- with motor circuit breaker with relay for 1 feeding machine with motor 1.5 kW, 380/400 Volt, 50 Hz
- and motor circuit breaker

U12003-3 - 2,2 - 0,18

Control MFK 3-2,2-0,18

- with motor circuit breaker with relay for 1 feeding machine with motor 2,2 kW, 380/400 Volt, 50 Hz
- and motor circuit breaker

U12003-3 - 2,2 - 0,75

Control MFK 3-2,2-0,75

- with motor circuit breaker with relay for 1 feeding machine with motor 2,2 kW, 380/400 Volt, 50 Hz
- and motor circuit breaker

basic components



U12005

sensor on delay

U12005.....VC12RT23010M 230V

U12005-24V.....VC12RTM2410M, multi-range voltage 24V DC - 230V AC

Qty: 1 Pcs.



U12006

sensor switch-off delayed

U12006.....VC11RT23010M 230V

U12006-24V.....VC11RTM2410M, multi-range voltage 24V DC - 230V AC

Qty: 1 Pcs.



U12020

soft starter up to 3 kW

Qty: 1 Pcs.



U12022

safety switch in plastic case

Qty: 1 Pcs.

basic components



U12025

switch box with selector switch I-II-III

- for control of 3 feed intake hoppers with motor driven dosing screw
 - completely pre-assembled in plastic case
 - for Easy Control 2
- Qty: 1 pcs.



U13005 + U13006

micro dosing dispenser

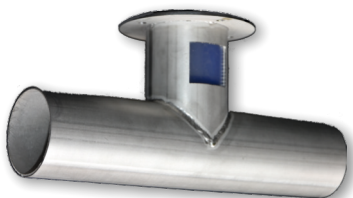
- stainless steel (AISI 304)
 - for powders
 - with dosing auger and mixing wheel
 - 24V DC electric motor
 - suitable for 13020
- U13005.....6 Liter
U13006.....20 Liter
Qty: 1 pcs.



U13020

control for 13005 and 13006

- adjustable from 0 to 100%
 - U=230V AC
 - plastic body, IP 54
- Qty: 1 pcs.



U13010 + U13011

stainless steel pipe adapter

suitable for 13005 and 13006

- U13010.....for ø 60 mm conveyor pipe
U13011.....for ø 50 mm conveyor pipe
Qty: 1 pcs.



U13015

stainless steel closing plate

for pipe adapter 13010 and 13011

acesories



U10175

wire rope, stainless steel 3 mm

- 7 x 19 mm, highly flexible
- Qty: 250 mtr.



U10180

clamps for wire rope

- 10180..... for 4 mm rope, stainless steel; Qty: 50 pcs.
- 10179..... for 5 mm rope, galvanized; Qty: 100 pcs.



U78040

clamping screw

- for hanging lead
- Qty: 100 pcs.



U10181

wire cable eye stiffener 4mm

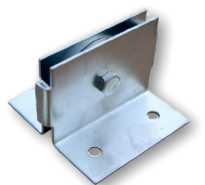
- material: stainless steel
- Qty: 50 pcs.



U10185

deflection roller with angle

- Ø = 2 Inch
- Qty: 30 pcs.



U10186-verz

deflection roller with angle

- for wire rope Ø 5 mm
- material: galvanized
- Qty: 30 pcs.

accessories



U10192

pulley 90 mm

- material: nylon / aluminium
- for cable 5mm
- load capacity: max. 180 kg
- Qty: 1 pcs.



U10193

pulley 90 mm

- material: steel / cast iron
- for cable 5mm
- load capacity: max. 200 kg
- Qty: 1 pcs.



U10194

pulley 65 mm

- material: stainless steel / nylon
- for cable 5mm
- load capacity: max. 150 kg
- Qty: 1 pcs.



U10190

return spring for dosing trigger

Qty: 50 pcs.



U10195

eyelet plate 2-holes, galvanized

Qty: 1 pcs.



U10213

release station for dispensers

- max. force/pull: 400kg / 4000Nm
- complete with integrated end-switches
- 2250mm cable IP66, 24V
- length: 870 mm, height: 90 mm, width: 154 mm
- mat.-thickness: 3 mm
- incl. console
- Qty: 1 pcs.

accessories



U10212 + U10214

control for release station

- Switchbox unit for release station
- built into KST housing
- dimension (LxWxH): 313x253x115 mm
- with selector switch 1/0/2
- 1 = release station manually "open"
- 0 = automatic operation
- 2 = release station manually "closed"
- compl. with terminals for connection
- to Easytronic II / EASY Control
- cpl. with terminals for connection
- of max. 1 actuator
- Switching unit wired ready for connection
- to terminal blocks, manufactured according to
- applicable electrical and CE regulations

Qty: 1 pcs.

U10212..... with 2 load contactors B6-30-01 230V for opening and closing the release station (max. 1 piece can be connected!),

U10214..... with power supply 24 volt, 10 ampere with 2 overload protections B6-30-10 for opening and closing of the release station (max 2 pieces connectable)

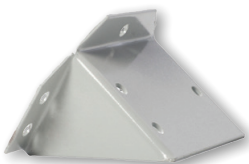


U10207

hand winch H1200 B

• lifting force: 550 kg

Qty: 1 pcs.



U10208

console for hand winch H1200 B

Qty: 8 pcs.

accessories

U10210



release lever for dosing trigger

Qty: 1 pcs.

U10211



console for release lever

Qty: 1 pcs.

U10215



shelf support 2.000 mm, galvanized

- square profile 40x15mm
- for M8 bolts

Qty: 1 pcs.

U26000 - U26000-160



ceiling hook

- thread: 8 mm
- thread length: 45 mm
- total length: 170 mm
- hook diameter: 24 mm

U26000.....material: galvanized, Qty: 250 pcs.

U26000-160.....material: stainless steel, Qty: 100 pcs.

U26002



ceiling hook ø 6mm

- total length: 100 mm
- material: stainless steel

Qty: 100 pcs.

U26006 - U26008



chain, 3 mm

U26006.....galvanized; DIN 5685; Qty: 30 mtr.

U26008.....stainless steel; DIN 5685B; Qty: 100 mtr.

accessories



U26009

nylon rope Ø 6 mm

- for ceiling suspension of the chain conveyor
- Qty: 200 mtr.



U26010 - U26011

S-hook 3 mm

- symmetric
- Qty: 100 pcs.
U26010.....material: galvanized
U26011.....material: stainless steel



U11020

threaded rod M8

- length: 1.000 mm
- U11020.....material: galvanized
Qty: 50 pcs.



U11030

cable tie 7,8 x 360 mm

- color: black
- Qty: 100 pcs.

accessories

U11055 - U11070



HT pipe DN75

with one-sided plug-in sleeve

• color: grey

U11055.....length: 250 mm; Qty: 20 pcs.

U11060.....length: 500 mm; Qty: 120 pcs.

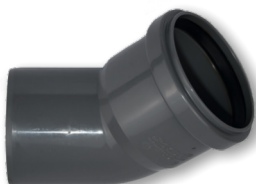
U11062.....length: 750 mm; Qty: 6 pcs.

U11065.....length: 1.000 mm; Qty: 20 pcs.

U11067.....length: 1.500 mm; Qty: 6 pcs.

U11070.....length: 2.000 mm; Qty: 20 pcs.

U11150 - U11162



HT bend DN75

U11150.....angle: 15°

U11155.....angle: 30°

U11160.....angle: 45°

U11161.....angle: 67°

U11162.....angle: 87°

Qty: 20 pcs

U11185



HT double socket DN75

Qty: 20 pcs

U11170



HT T-piece branch pipe DN75/75

angle 45°

Qty: 20 pcs.

U11045



Y-piece (sleeve/sleeve/sleeve) 75 mm

• material: ABS

Qty: 1 pcs.

accessories

U11300 - U11305



double u-bolt M8 135/80/135 mm on 1"

- incl. bent back plate 110x25x4 mm
- 11305.....material: galvanized
- Qty: 80 pcs.

U11310 - U11315



u-bolt M8 135/90/135 mm

- incl. back plate 120x25x4 mm
- 11310.....material: galvanized
- 11315.....material: stainless steel
- 11312.....M8, 170/93/170 mm, material: galvanized
- Qty: 100 pcs.

U10083 - U10083-80



flat-clamp 2" x 25 -A2

- material: stainless steel
- 10083.....for conveyor tube 60
- 10083-75.....for conveyor tube 75
- Qty: 1 pcs.

U12010



cable gland

- sensor mounting M40x1,5 mm
- with counter nut
- Qty: 1 pcs.

U12015



sensor holder

- galvanized
- for pipe size: Ø 60 mm
- Qty: 1 pcs.

accessories



U14000

ceiling suspension for chain conveyor

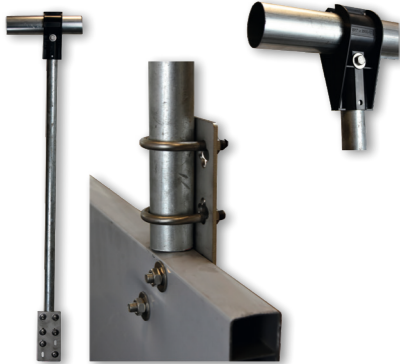
- for ceilings with wooden supports every 2,5 mtr.
- consists of:
 - 1x ceiling hook, galvanized
 - 2 mtr. nylon rope 6 mm
- Qty: 100 sets



U14003

ceiling suspension for chain conveyor

- for ceilings with wooden supports every 2,5 mtr.
- consists of:
 - 1x ceiling hook, galvanized
 - 1x S-hook
 - 3 mtr. chain 3mm
- Qty: 10 sets



U14005

support for penning system (farrowing crate)

universal for chain conveyor

- consists of:
 - 1.500 mm 1" pipe
 - 4x pipe clamp
 - 1x pipe clamp 1" (incl. screws)
 - 1x bracket / plate 180 x 80mm
 - 4x 6-K-screw M8 x 50 A2
 - 4x nut M8 self-locking
 - 4x nut M8
- 1" pipes are delivered in 6 mtr
- Qty: 28 sets



U14010

suspension for chain-system

attached to wall (tube 60 mm)

- consisting of:
 - 2 wall brackets 250x350 mm
 - clamp 60-65 mm
 - 2 x screw anchor S10
 - 2 x screw 8 x 70
 - 2 x hexagon head screw 6x50
 - 2 x nut M6
 - 4 x washer 6mm
- Qty: 20 sets

accessories



U14015 - U14016

support for waterpipe to chain-conveyor 60mm

- consisting of:
 - 2 half cases
 - 1 screw 8x20 DIN 933 A2
 - 1 screw 8x35 DIN 933 A2
 - 2 nuts M8 DIN 985 A2
 - color: black
- U14015.....mounting 60/32
U14016.....mounting 60/25
Qty: 50 sets



U14500 - U14505

clamp 1"

- material: ABS
- U14500.....ø 60-63 mm
U14505.....ø 50 mm
Qty: 40 sets

spare parts



U20005-TM

motor 0.75 kW

- 0.75 kW B5 4p 3ph T1, TS8024
 - 50 Hz: 230/400 Volt, 1400 rpm
 - 60 Hz: 277/480 Volt, 1750 rpm
 - output shaft: 19 mm
- Qty: 1 pcs



U20010-TM

motor 1.1 kW

- 1.1 kW TS 90S4 B5 4p 3ph T1
- 50 Hz: 230/400 Volt, 1400 rpm
- 60 Hz: 276/477 Volt, 1680 rpm
- output shaft:



U20015-TM

motor 1.5 kW

- 1.5 kW 90L14 B5 4p 3pH T1
 - 50 Hz: 230/400 Volt, 1400 rpm
 - 60 Hz: 277/480 Volt, 1750 rpm
 - output shaft: 24 mm
- Qty: 1 pcs.

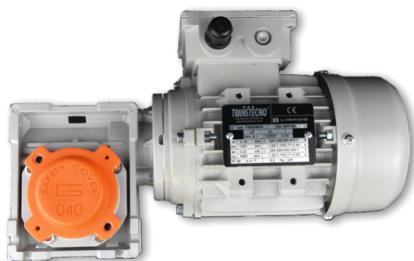


U18110-TM

motor 2,2 kW

- 2,2 kW 90LBB4 B5 4p 3pH
 - 50 Hz: 230/400 Volt, 1400 rpm
 - 60 Hz: 277/480 Volt, 1680 rpm
 - output shaft: ø 24 mm
- Qty: 1 pcs.

spare parts



U18111

gear motor 0,18 kW

- 3Ph 50Hz, CM 040 i 1:20
 - TS6324 63 B14
 - Ø18 mm Hohlwelle
- Qty: 1 pcs.



U18099 - U18100

gear

- output shaft: Ø 38 mm
- Qty: 1 pcs.
- | | |
|-------------|--------------------------|
| U18099..... | POK 150 F1S 40P90 B5 O1 |
| U18100..... | POK 220 F1S 40P90 B5 O10 |



U18029- montiert

drive wheel for drive unit

- hollow shaft Ø 38 mm
 - for chain with 71,5 mm pitch
- Qty: 1 pcs.



U18029 - scher

drive wheel with shear pin

- hollow shaft Ø 38 mm
 - for chain with 71,5 mm pitch
- Qty: 1 pcs.



U180052

deflection pulley

- consists of:
 - 1x wheel
 - 2x ball bearings
 - 1x axle
 - 1x lock ring Ø 15 mm (seeger ring)
- Qty: 1 pcs.

spare parts

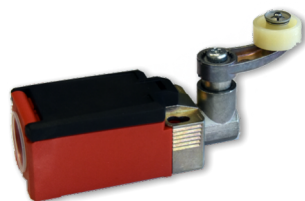


U18115

electro-mechanical roller switch

chain length monitoring

Qty: 1 pcs.



U18116

electro-mechanical roller switch

lid monitoring

Qty: 1 pcs.



U18015 - U18017

motor shaft for drive unit

- gear hollow shaft: Ø 32 mm
- drive wheel hollow shaft: Ø 38 mm
- without parallel key

Qty: 1 pcs.

U18015.....for EFT drive unit 1,1 kW + 1,5 KW; for gear CM075

U18017.....for EFT drive unit 2,2 kW; for gear CM075.



U18112

connector 19/24

for motor 0,75 kW article 20005-TM

- I88-SU1Z AH

Qty: 1 pcs.

Catalog 2024



EFT

Billerbeck

NOTIZEN

Ewering Farm Technology GmbH & Co. KG
Hamern 22
48727 Billerbeck
+49 176 8783718
info@eft-billerbeck.de
www.eft-billerbeck.de
district court Coesfeld HRA9658
VAT number: DE359207645